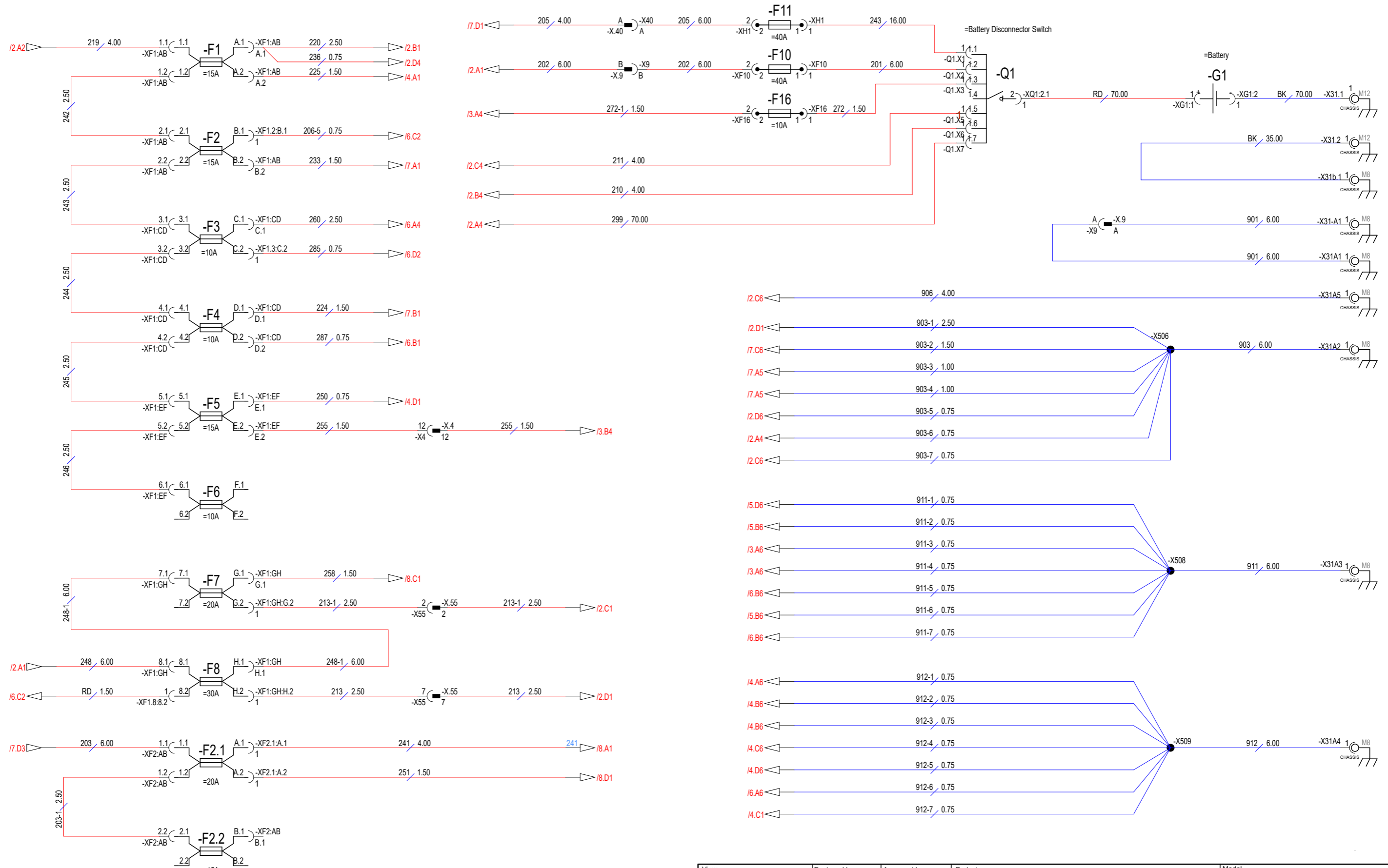


This document will remain the property of Dynapac Compaction Equipment AB and may not without a written permission of the said company be copied, communicated to any third part or used for manufacturing purposes.

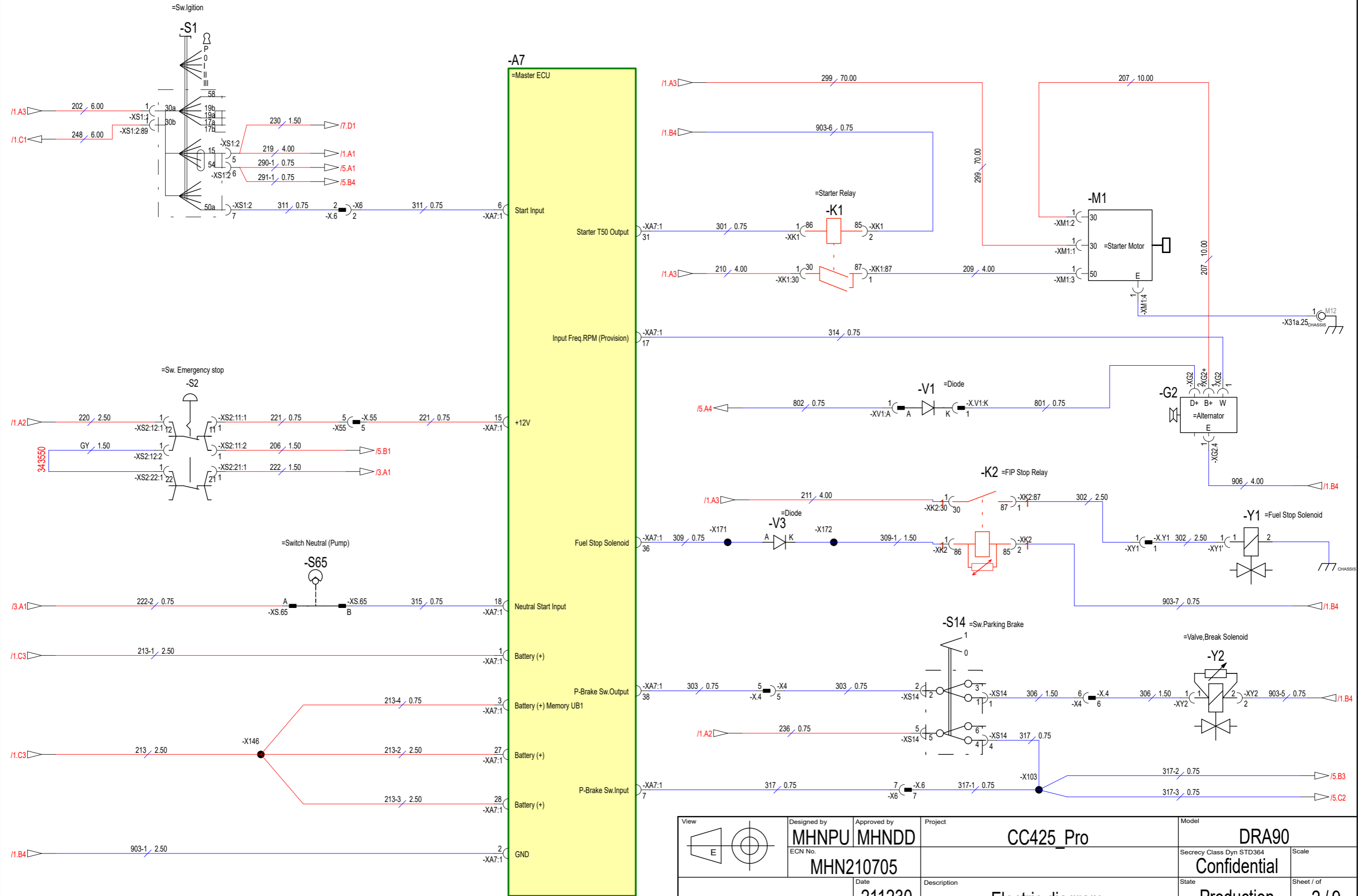
Dynapac A3 - Rev. 2017/02/28 - SFTRoP



View 	Designed by MHNPU MHNDD	Approved by	Project CC425_Pro	Model DRA90	
	ECN No. MHN210705			Secrecy Class Dyn STD364 Confidential	Scale
DYNAPAC	Date 211230	Description Electric diagram Power Supply & GND	State Production	Sheet / of 1/9	
	No of Change 0		Rev. C	No. 4812332065	

This document will remain the property of Dynapac Compaction Equipment AB and may not be copied, reproduced, or disseminated in any form or by any means without the written permission of the said company. Any unauthorized copying, reproduction, or dissemination is strictly prohibited and may result in legal action.

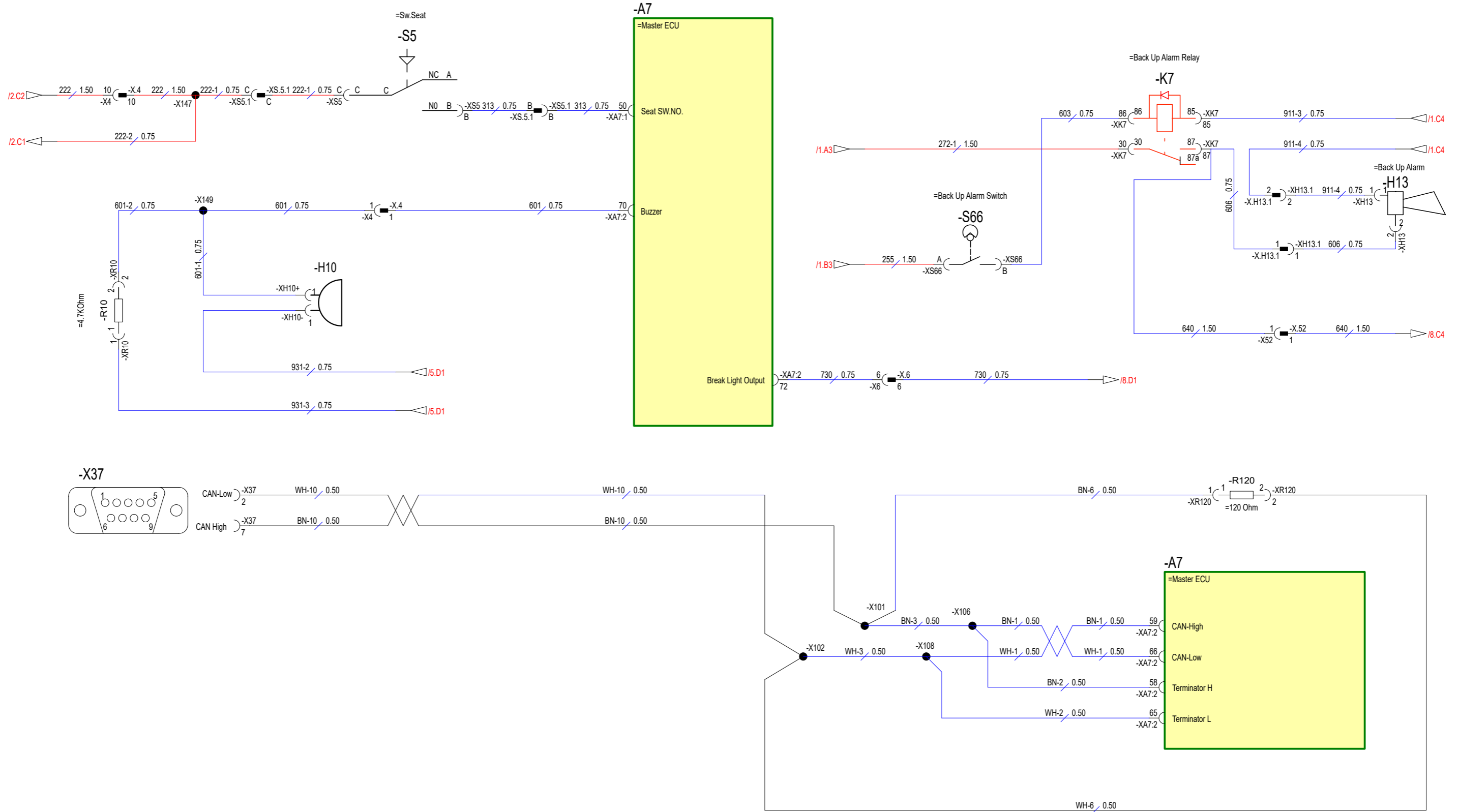
Dynapac A3 - Rev. 2017/02/28 - SFTRoP



View 	Designed by MHNPU MHNDD	Approved by	Project CC425_Pro	Model DRA90	
	ECN No. MHN210705			Secrecy Class Dyn STD364 Confidential	Scale
DYNAPAC	Date 211230	Description Electric diagram Start, Stop, Break		State Production	Sheet / of 2 / 9
	No of Change 0			Rev. C	No. 4812332065

This document will remain the property of Dynapac Compaction Equipment AB and may not without a written permission of the said company be copied, communicated to any third part or used for manufacturing purposes.

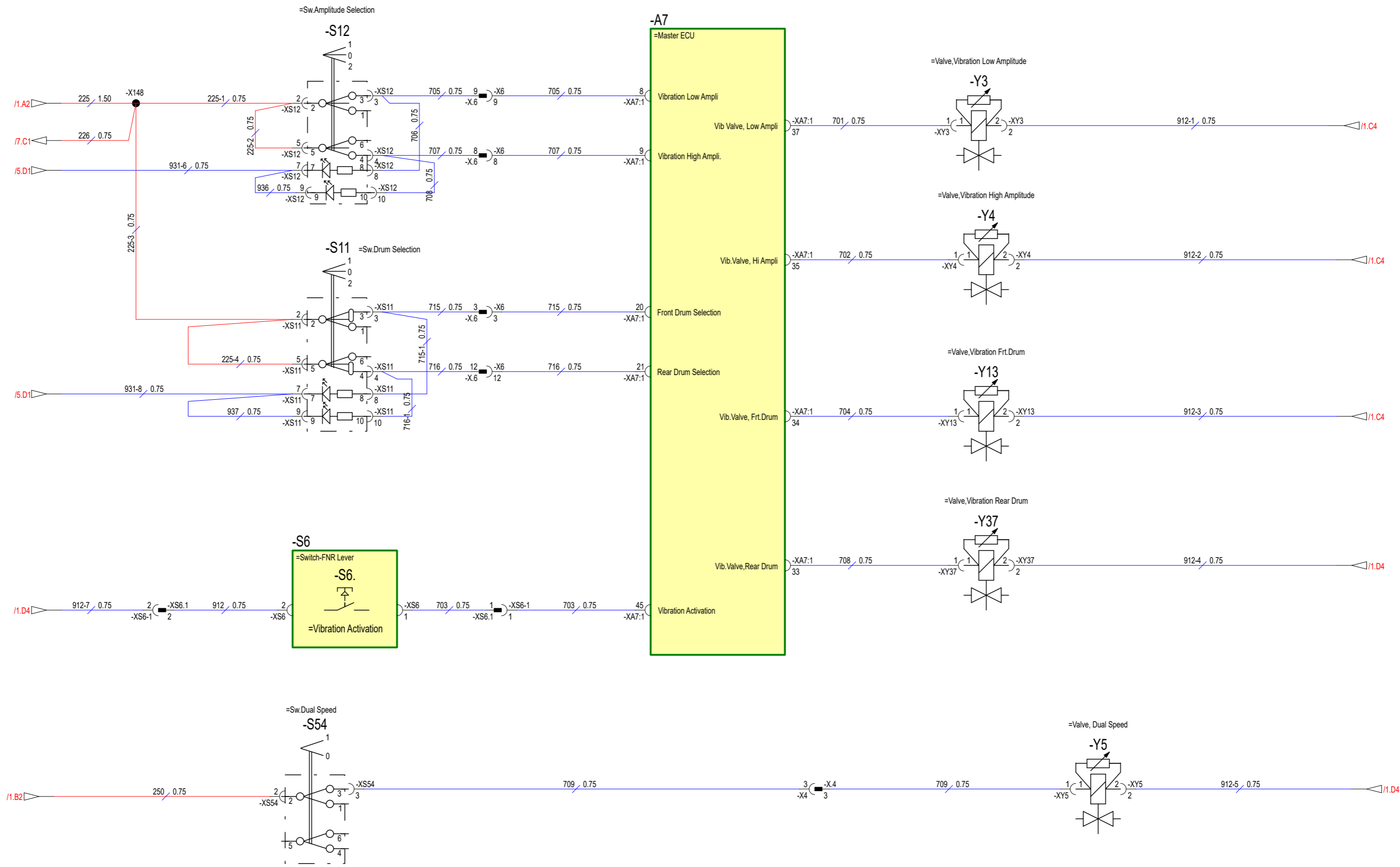
Dynapac A3 - Rev. 2017/02/28 - SFTRoP



View E	Designed by MHNPU	Approved by MHNDD	Project CC425_Pro	Model DRA90	
	ECN No. MHN210705			Secrecy Class Dyn STD364 Confidential	Scale
DYNAPAC	Date 211230	No of Change 0	Description Electric diagram Interlock, Alarm, CAN	State Production	Sheet / of 3 / 9
	Rev. C			No. 4812332065	

This document will remain the property of Dynapac Compaction Equipment AB and may not be copied, reproduced, or transmitted in any form or by any means, electronic or mechanical, including photocopying, recording, or by any information storage and retrieval system, without the prior written permission of the said company.

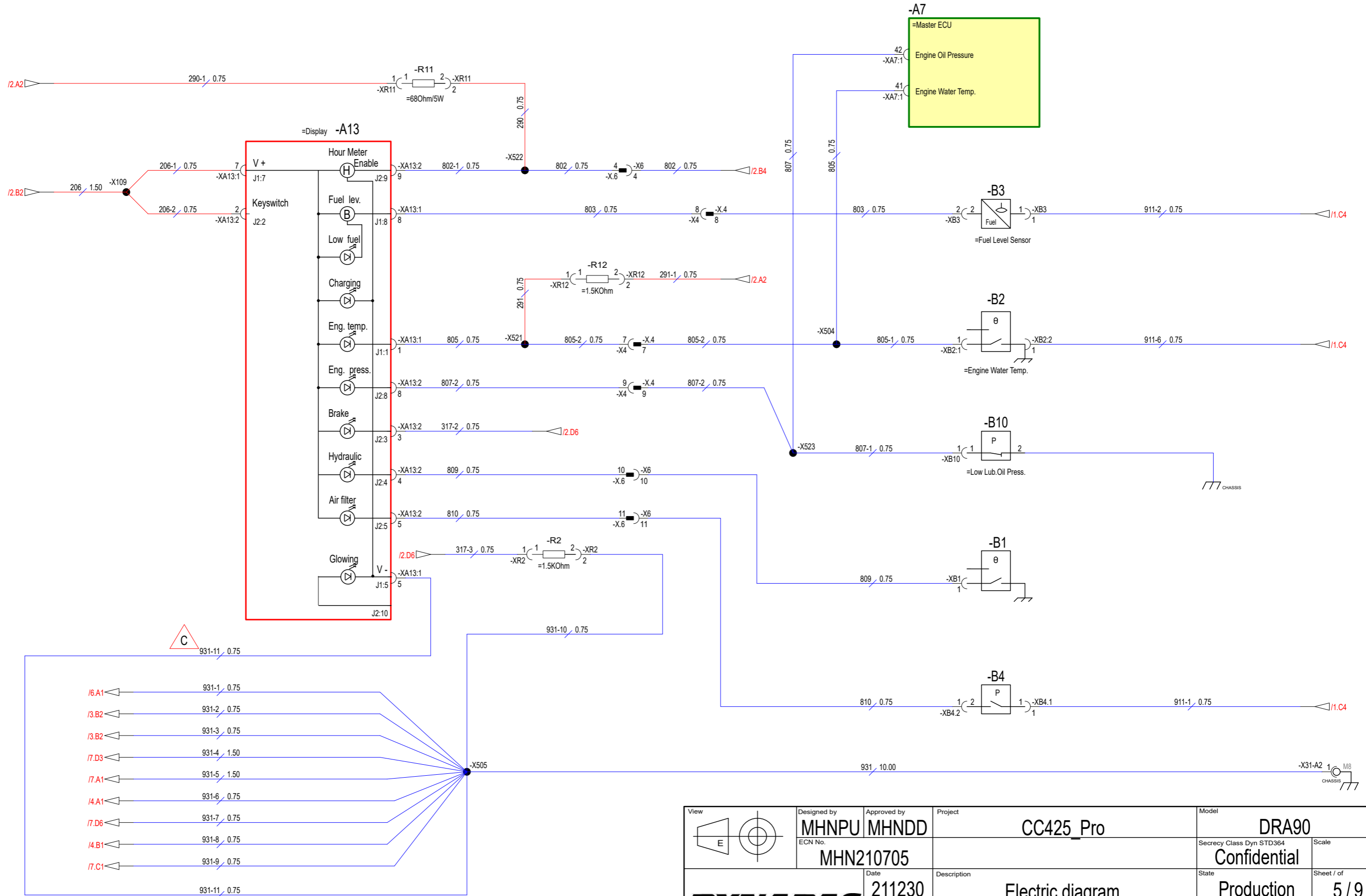
Dynapac A3 - Rev. 2017/02/28 - SFTRoP



View 	Designed by MHNPU	Approved by MHNDD	Project CC425_Pro		Model DRA90	
	ECN No. MHN210705				Secrecy Class Dyn STD364 Confidential	Scale
DYNAPAC	Date 211230	Description Electric diagram Vibration & Speed			State Production	Sheet / of 4 / 9
	No of Change 0				Rev. C	No. 4812332065

This document will remain the property of Dynapac Compaction Equipment AB and may not without a written permission of the said company be copied, communicated to any third part or used for manufacturing purposes.

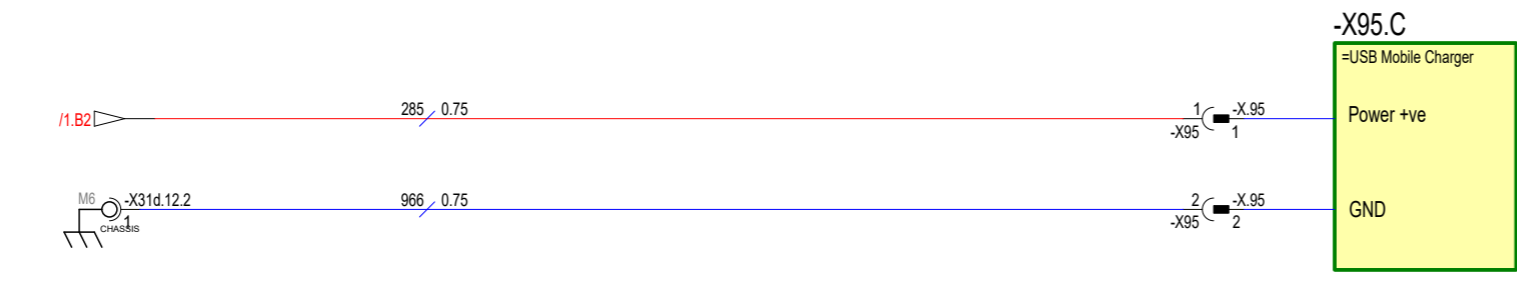
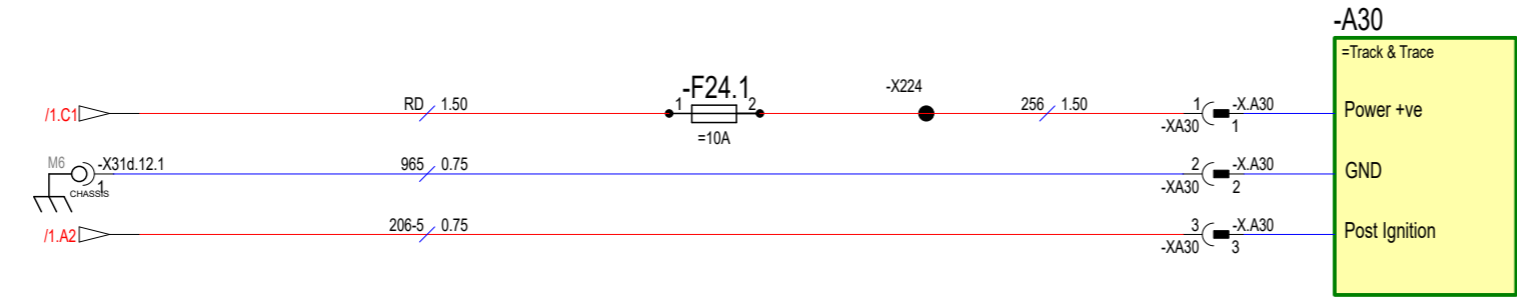
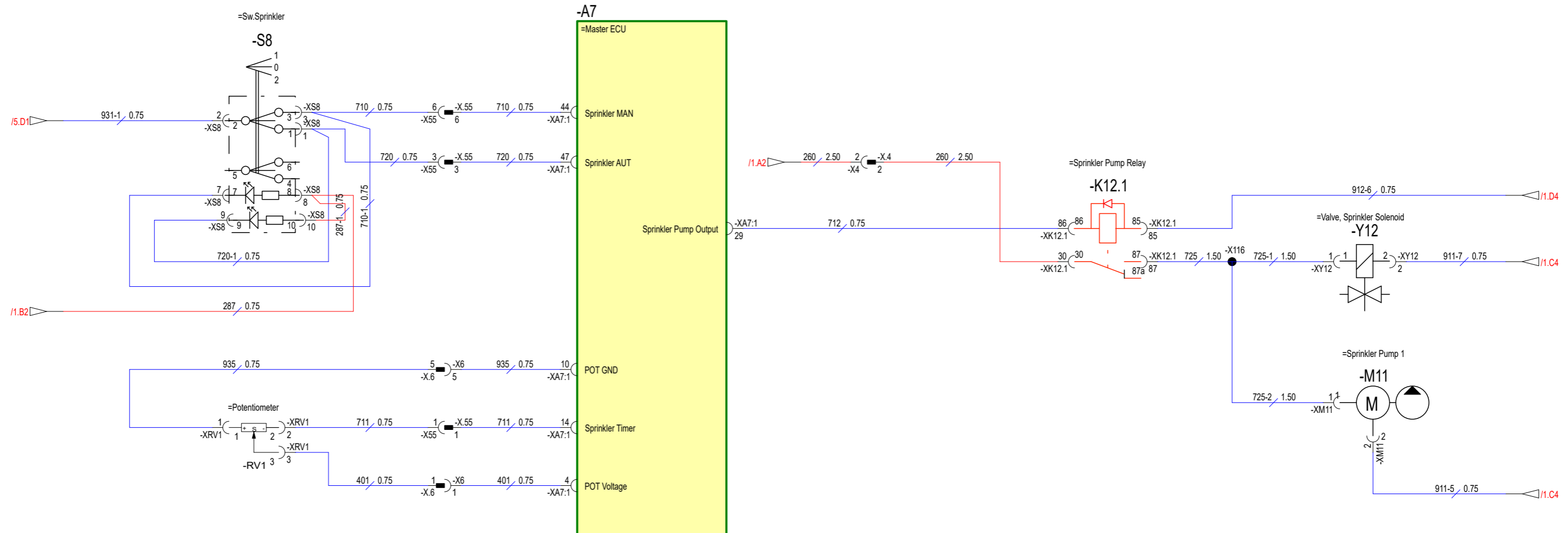
Dynapac A3 - Rev. 2017/02/28 - SFTRoP



View E	Designed by MHNPU MHNDD	Approved by	Project CC425_Pro	Model DRA90	
	ECN No. MHN210705			Secrecy Class Dyn STD364 Confidential	Scale
DYNAPAC		Date 211230	Description Electric diagram Display & Sensors	State Production	Sheet / of 5 / 9
		No of Change 1		Rev. C	No. 4812332065

This document will remain the property of Dynapac Compaction Equipment AB and may not without a written permission of the said company be copied, communicated to any third part or used for manufacturing purposes.

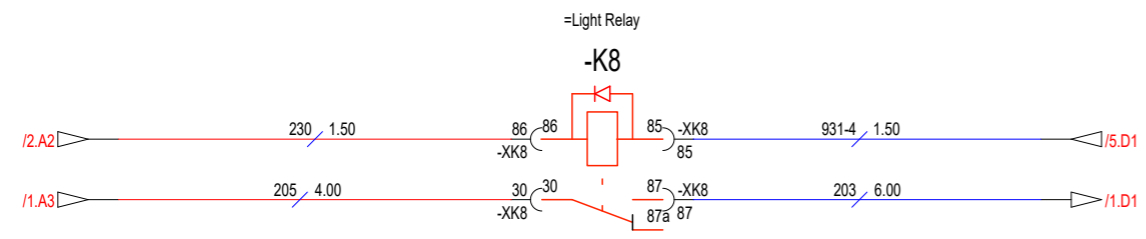
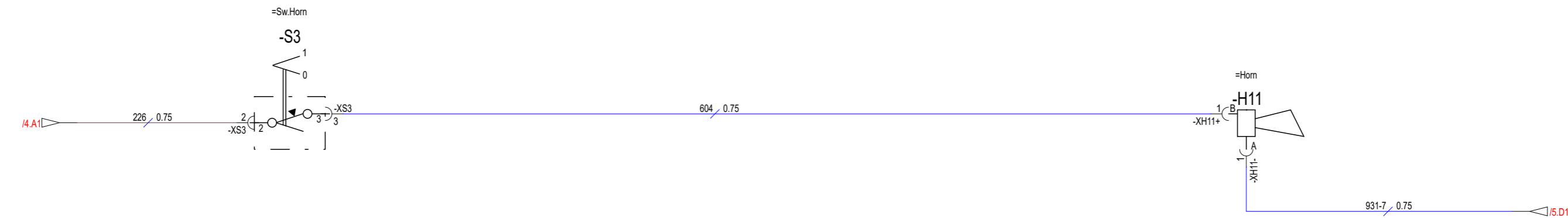
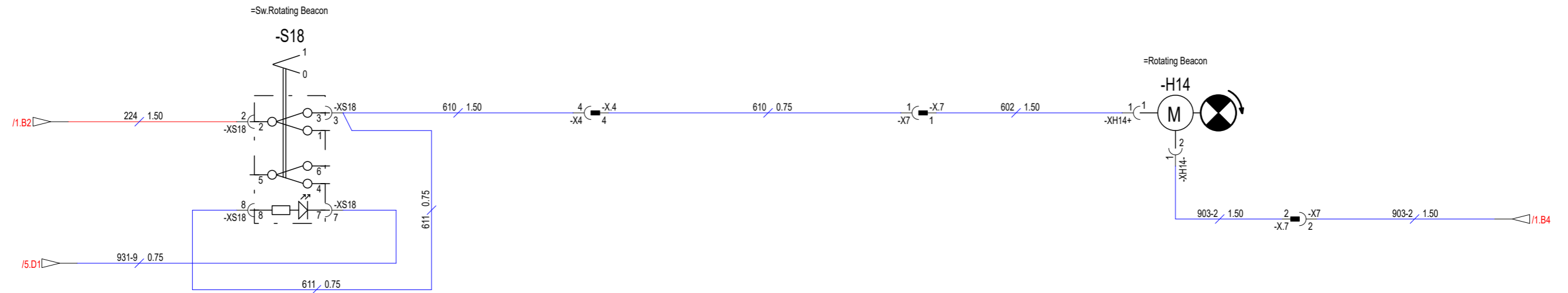
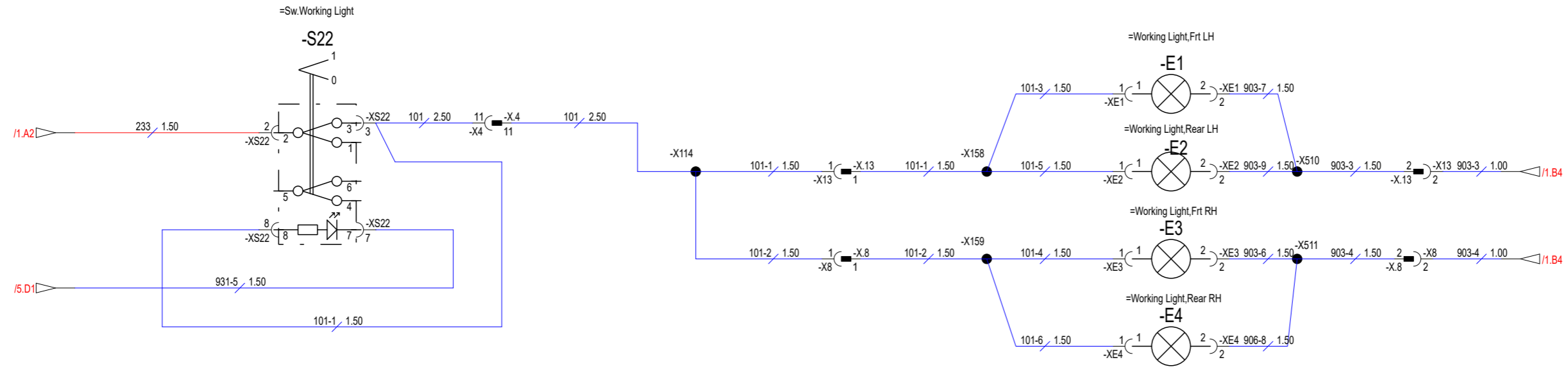
Dynapac A3 - Rev. 2017/02/28 - SFTRoP



View 	Designed by MHNPU MHNDD	Approved by MHNDD	Project CC425_Pro	Model DRA90	
	ECN No. MHN210705			Secrecy Class Dyn STD364 Confidential	Scale
DYNAPAC	Date 211230	Description Electric diagram	State Production	Sheet / of 6 / 9	
	No of Change 0	Description Sprinkler, Dyn@Link & USB Charger		Rev. C	No. 4812332065

This document will remain the property of Dynapac Compaction Equipment AB and may not without a written permission of the said company be copied, communicated to any third part or used for manufacturing purposes.

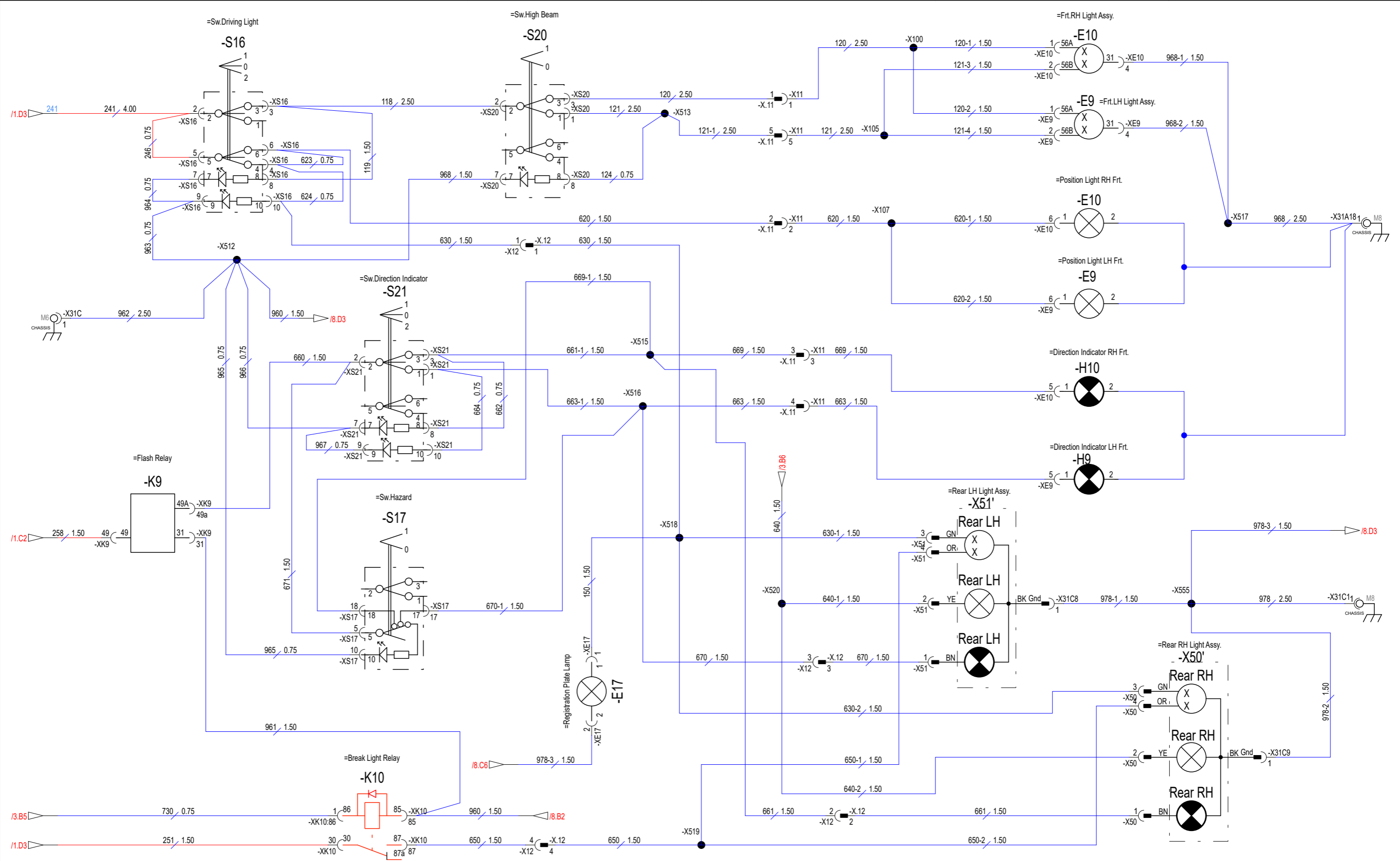
Dynapac A3 - Rev. 2017/02/28 - SFTRoP



View 	Designed by MHNPU MHNDD	Approved by MHNDD	Project CC425_Pro		Model DRA90	
	ECN No. MHN210705				Secrecy Class Dyn STD364 Confidential	Scale
DYNAPAC	Date 211230	Description Electric diagram Work Lights/Beacon/Horn			State Production	Sheet / of 7 / 9
	No of Change 0				Rev. C	No. 4812332065

This document will remain the property of Dynapac Compaction Equipment AB and may not without a written permission of the said company be copied, communicated to any third part or used for manufacturing purposes.

Dynapac A3 - Rev. 2017/02/28 - SFTRoP



View 	Designed by MHNPU MHNDD	Approved by	Project CC425_Pro	Model DRA90	
	ECN No. MHN210705			Secrecy Class Dyn STD364 Confidential	Scale
DYNAPAC	Date 211230	Description Electric diagram Driving Lights	State Production	Sheet / of 8 / 9	
	No of Change 0		Rev. C	No. 4812332065	

Reference List

Device Name	Description	Sheet Ref.	Device Name	Description	Sheet Ref.
-A7	Master ECU	/2.A3	-S6	Switch-FNR Lever	/4.C2
-A13	Display	/5.B2	-S8	Sw.Sprinkler	/6.A1
-A30	Track & Trace	/6.C4	-S11	Sw.Drum Selection	/4.B2
-B1	Temp. sensor hydraulic oil	/5.C5	-S12	Sw.Amplitude Selection	/4.A2
-B2	Engine Water Temp.	/5.B5	-S14	Sw.Parking Brake	/2.C5
-B3	Fuel Level Sensor	/5.B5	-S16	Sw.Driving Light	/8.A1
-B4	Pressure sensor / switch air filter	/5.D5	-S17	Sw.Hazard	/8.C2
-B10	Low Lub.Oil Press.	/5.C5	-S18	Sw.Rotating Beacon	/7.B2
-E1	Working Light,Frt LH	/7.A4	-S20	Sw.High Beam	/8.A3
-E2	Working Light,Rear LH	/7.A4	-S21	Sw.Direction Indicator	/8.B2
-E3	Working Light,Frt RH	/7.A4	-S22	Sw.Working Light	/7.A2
-E4	Working Light,Rear RH	/7.B4	-S54	Sw.Dual Speed	/4.D2
-E9	Frt.LH Light Assy.	/8.A5	-S65	Switch Neutral (Pump)	/2.C2
-E9	Position Light LH Frt.	/8.B5	-S66	Back Up Alarm Switch	/3.B4
-E10	Frt.RH Light Assy.	/8.A5	-V1	Diode	/2.B5
-E10	Position Light RH Frt.	/8.A5	-V3	Diode	/2.C4
-E17	Registration Plate Lamp	/8.C3	-X37	Machine ECU Diagnostic	/3.C2
-F1	15A	/1.A1	-X95.C	USB Mobile Charger	/6.C4
-F2	15A	/1.A1	-Y1	Fuel Stop Solenoid	/2.C6
-F3	10A	/1.A1	-Y2	Valve,Break Solenoid	/2.D6
-F4	10A	/1.B1	-Y3	Valve,Vibration Low Amplitude	/4.A5
-F5	15A	/1.B1	-Y4	Valve,Vibration High Amplitude	/4.B5
-F6	10A	/1.C1	-Y5	Valve, Dual Speed	/4.D5
-F7	20A	/1.C1	-Y12	Valve, Sprinkler Solenoid	/6.B6
-F8	30A	/1.C1	-Y13	Valve,Vibration Frt.Drum	/4.B5
-F10	40A	/1.A4	-Y37	Valve,Vibration Rear Drum	/4.C5
-F11	40A	/1.A4			
-F16	10A	/1.A4			
-F24.1	10A	/6.C3			
-G1	Battery	/1.A6			
-G2	Alternator	/2.B6			
-H9	Direction Indicator LH Frt.	/8.B5			
-H10	Direction Indicator RH Frt.	/8.B5			
-H11	Horn	/7.C5			
-H13	Back Up Alarm	/3.A6			
-H14	Rotating Beacon	/7.B5			
-K1	Starter Relay	/2.B4			
-K2	FIP Stop Relay	/2.C5			
-K7	Back Up Alarm Relay	/3.A5			
-K8	Light Relay	/7.D2			
-K9	Flash Relay	/8.C1			
-K10	Break Light Relay	/8.D2			
-K12.1	Sprinkler Pump Relay	/6.A5			
-M1	Starter Motor	/2.B5			
-M11	Sprinkler Pump 1	/6.B6			
-Q1	Battery Disconnect Switch	/1.A5			
-R2	1.5KOhm	/5.C3			
-R10	4.7KOhm	/3.B1			
-R11	68Ohm/5W	/5.A2			
-R12	1.5KOhm	/5.B3			
-R120	120 Ohm	/3.C5			
-RV1	Potentiometer	/6.B1			
-S1	Sw.Igition	/2.A1			
-S2	Sw. Emergency stop	/2.B1			
-S3	Sw.Horn	/7.C2			
-S5	Sw.Seat	/3.A2			

View 	Designed by MHNPU MHNDD	Approved by	Project CC425 Pro	Model DRA90
	ECN No. MHN210705			Secrecy Class Dyn STD364 Confidential
DYNAPAC	Date 211230	Description Electric diagram Reference List	State Production	Sheet / of 9 / 9
	No of Change 0		Rev. C	No. 4812332065