



Workshop Manual

Valve Control Block-Work Hydraulic

(Conv. Large Pavers (Crawler Drive))



Content

Valve Control Block Large Pavers (Conv. Crawler) - Work Hydraulic	3
Overview.....	4
Exploded view.....	6
Function circuit screed raise / lower	7
Function circuit Hopper open / close	8
Function circuit Screed retract / extend	9
Function circuit Tow Point raise / lower	10
Technical Support Needed?	11

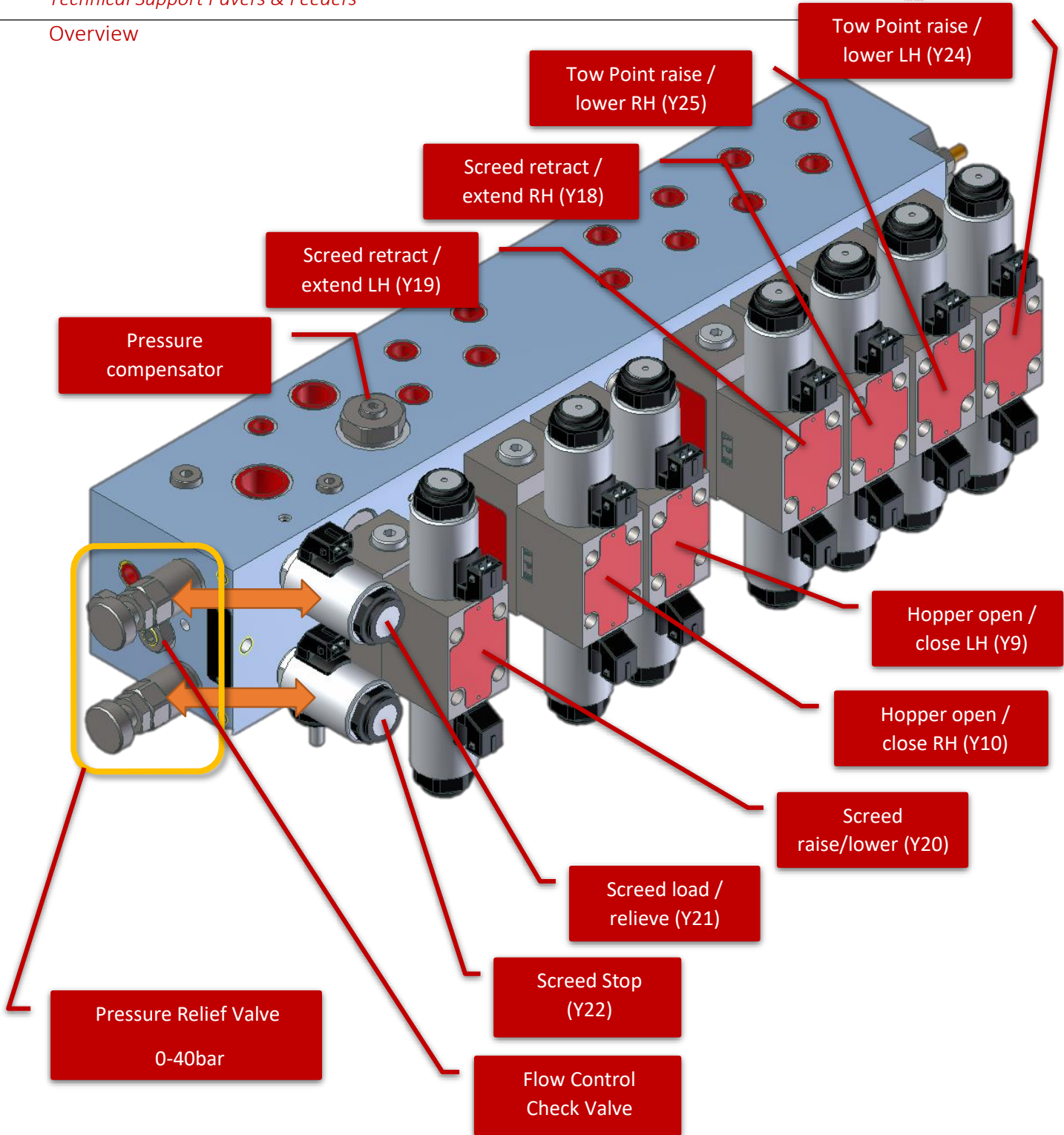
Note

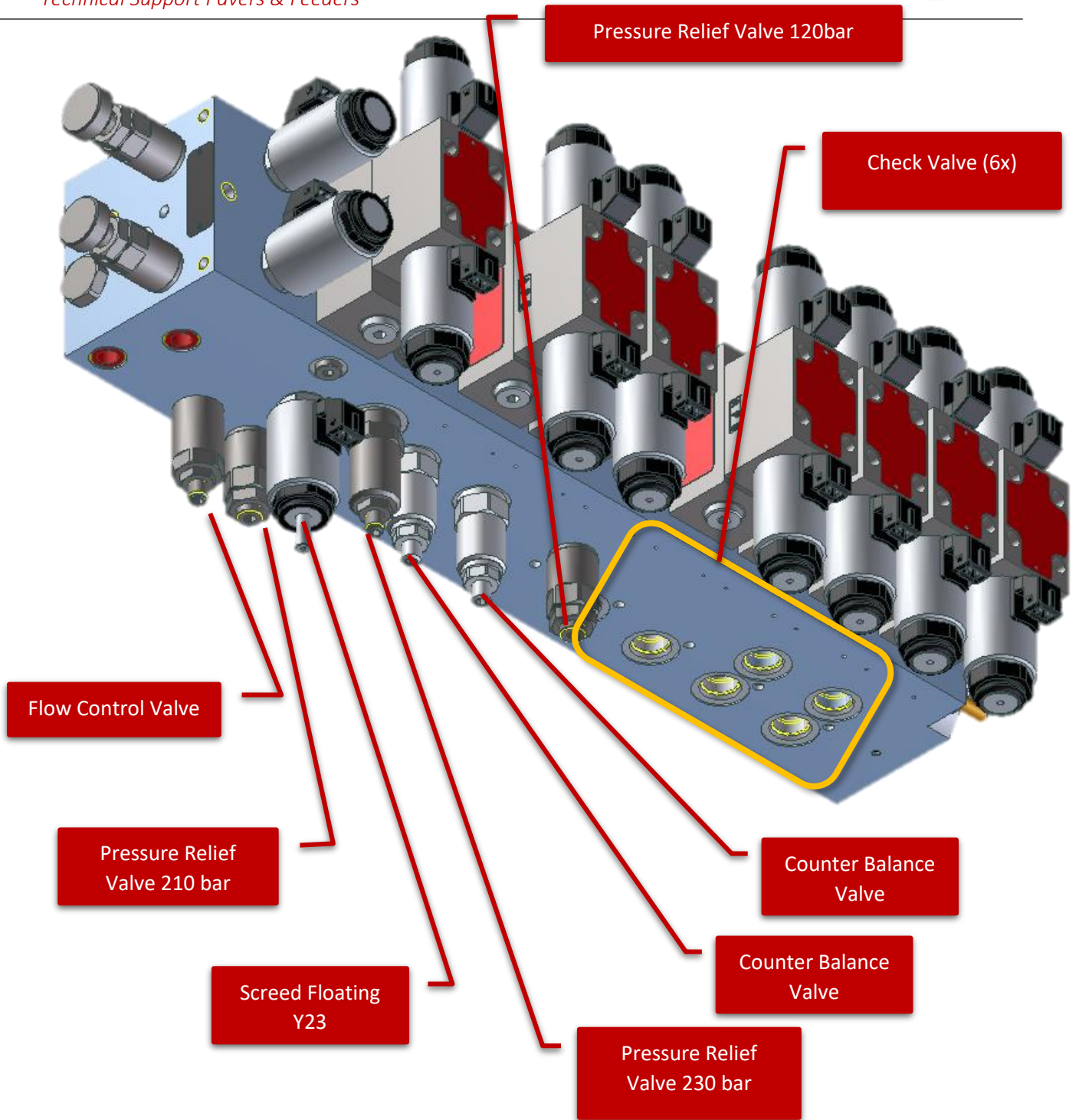
The following chapter is intended for orientation on the hydraulic block and should only be used in combination with the circuit diagram and parts catalog (POL) applicable to the respective product!

Reference

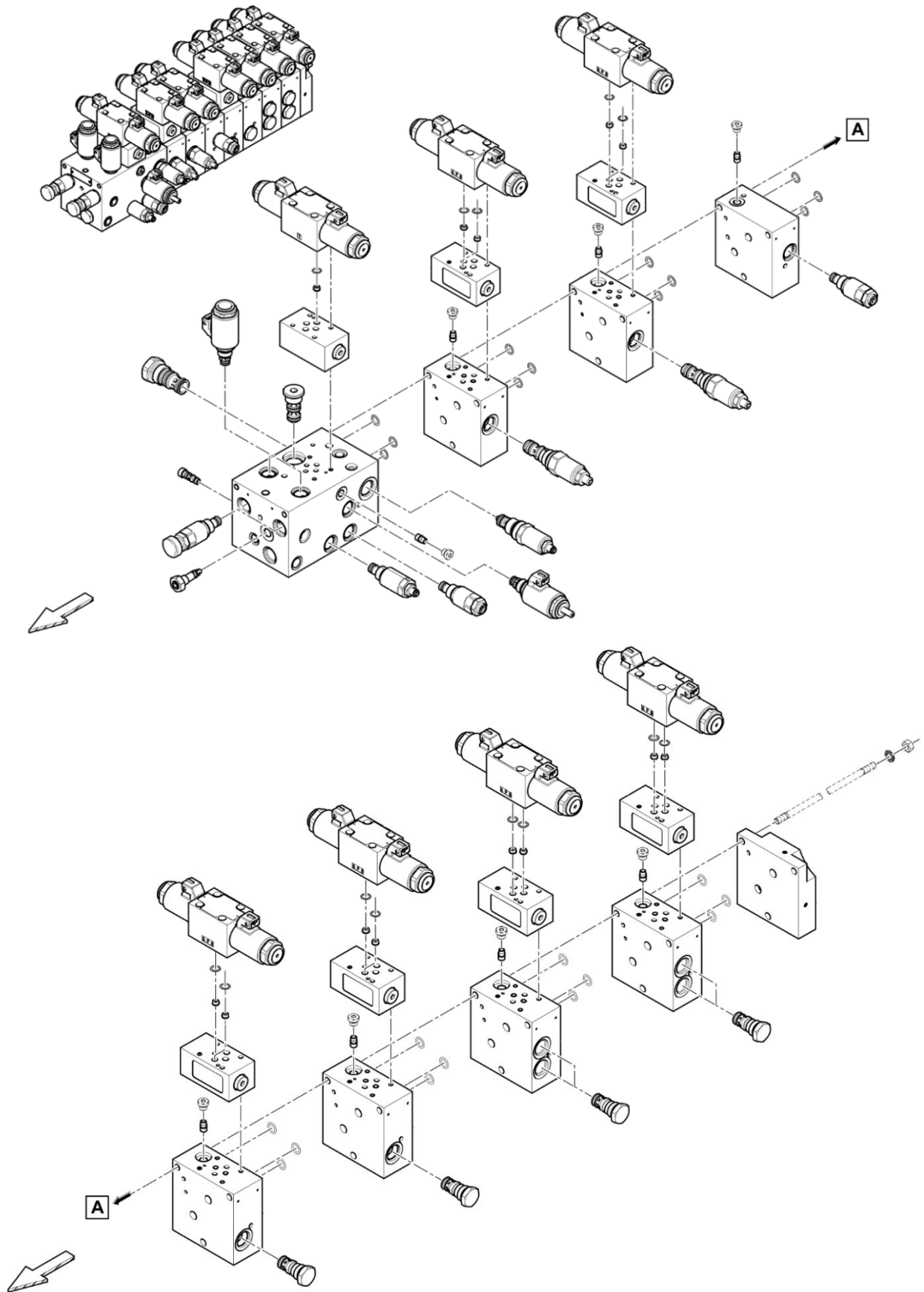
Block 4812075449 for 2019 Paver F2500C, F2500CS, F2530CS

Overview

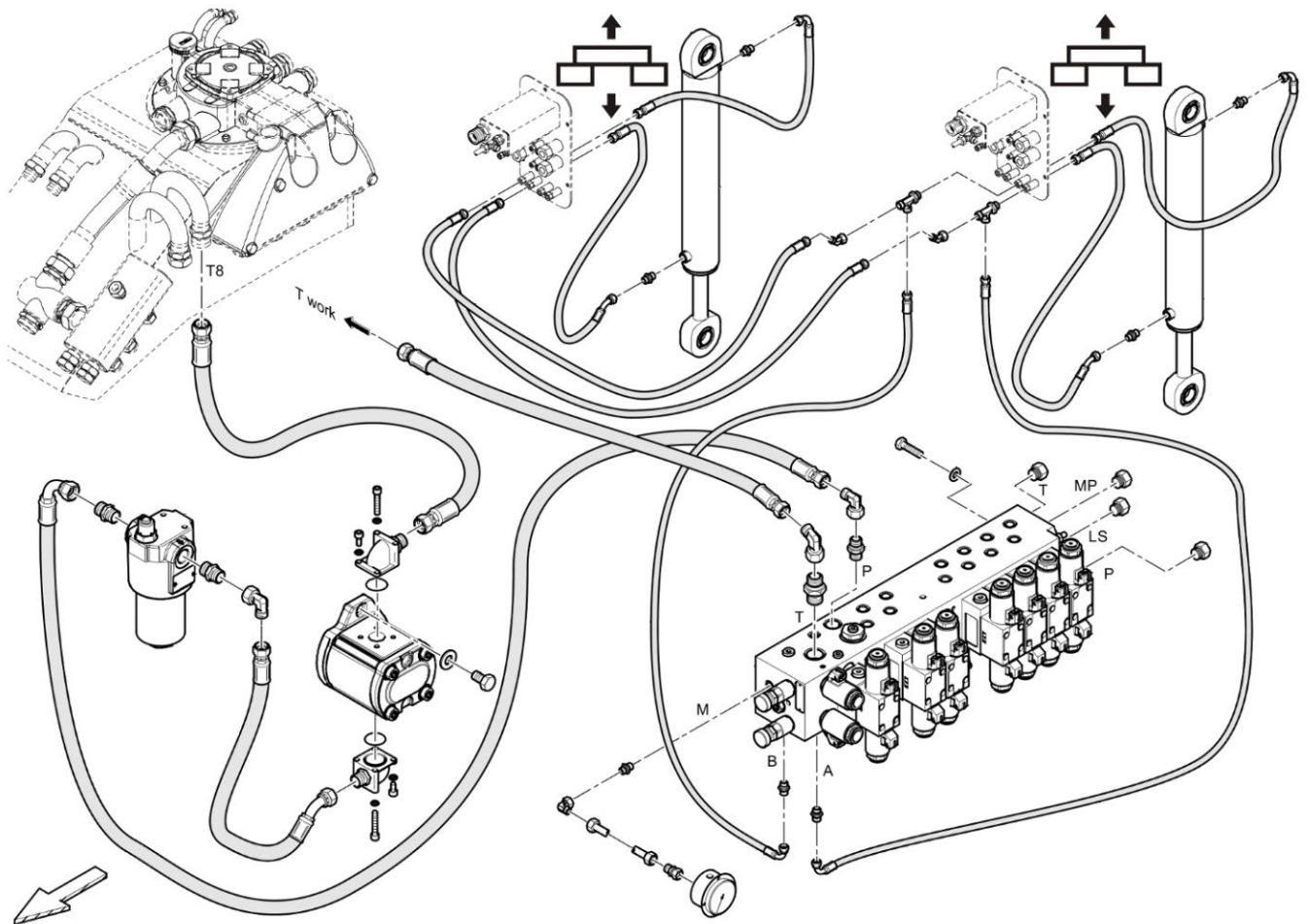
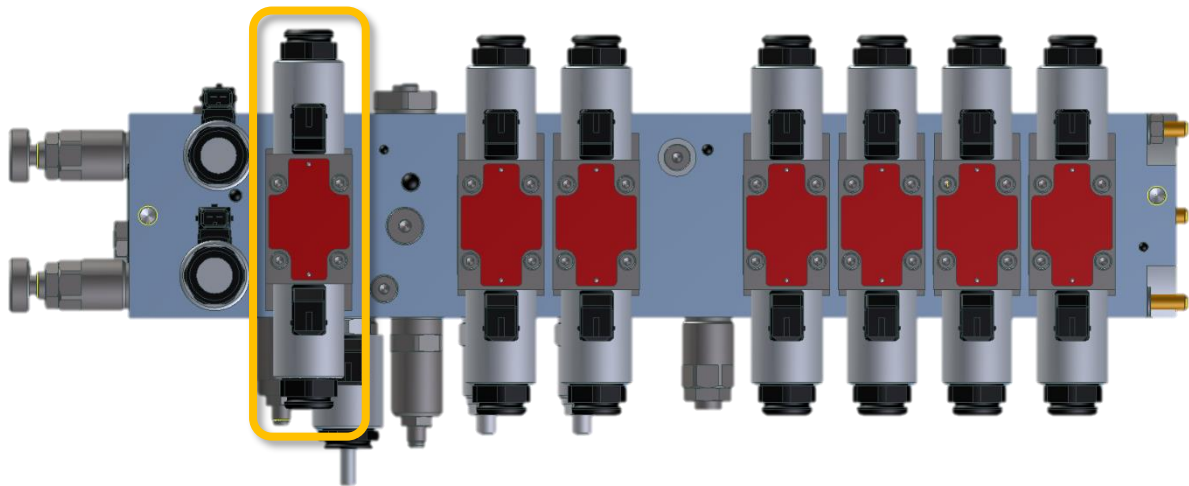




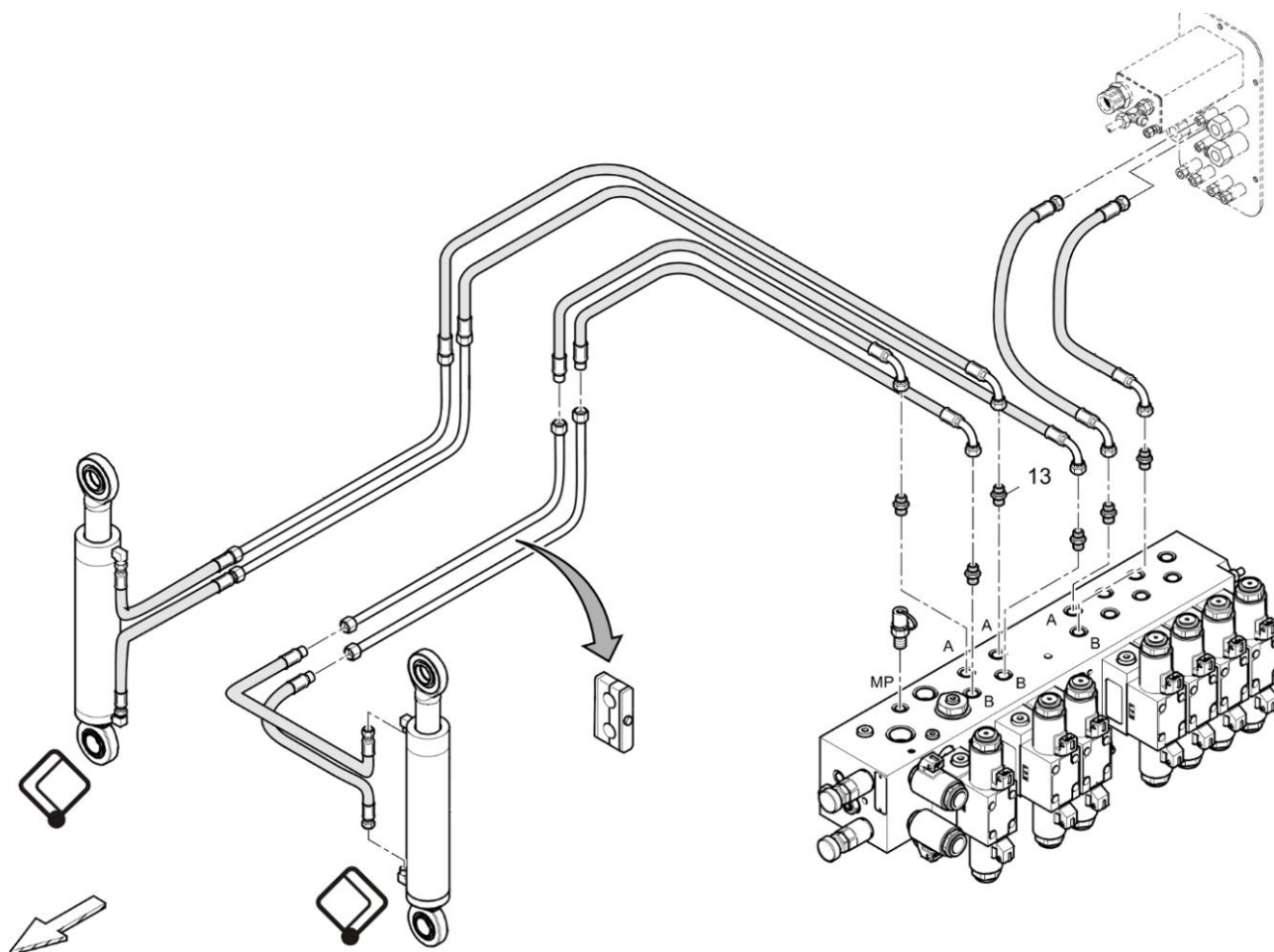
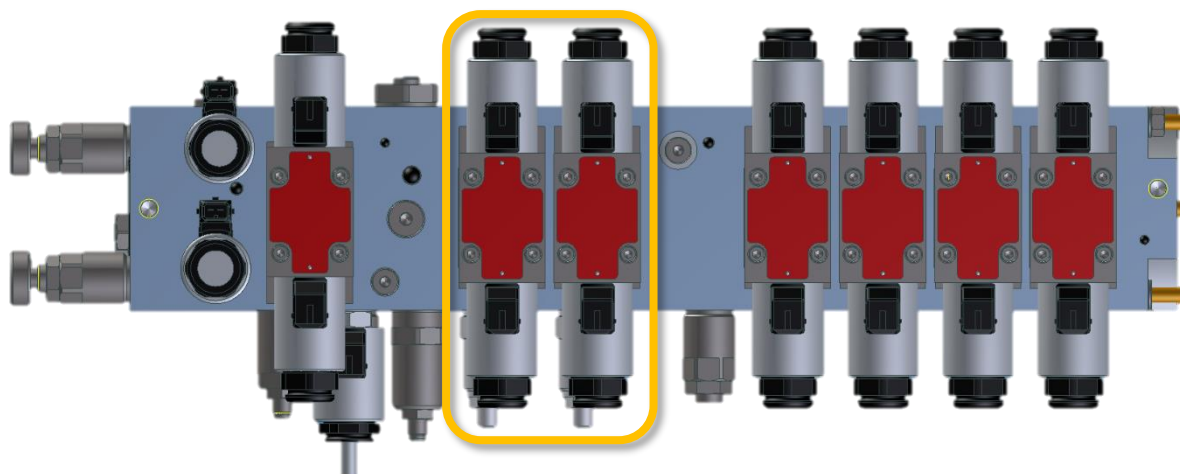
Exploded view



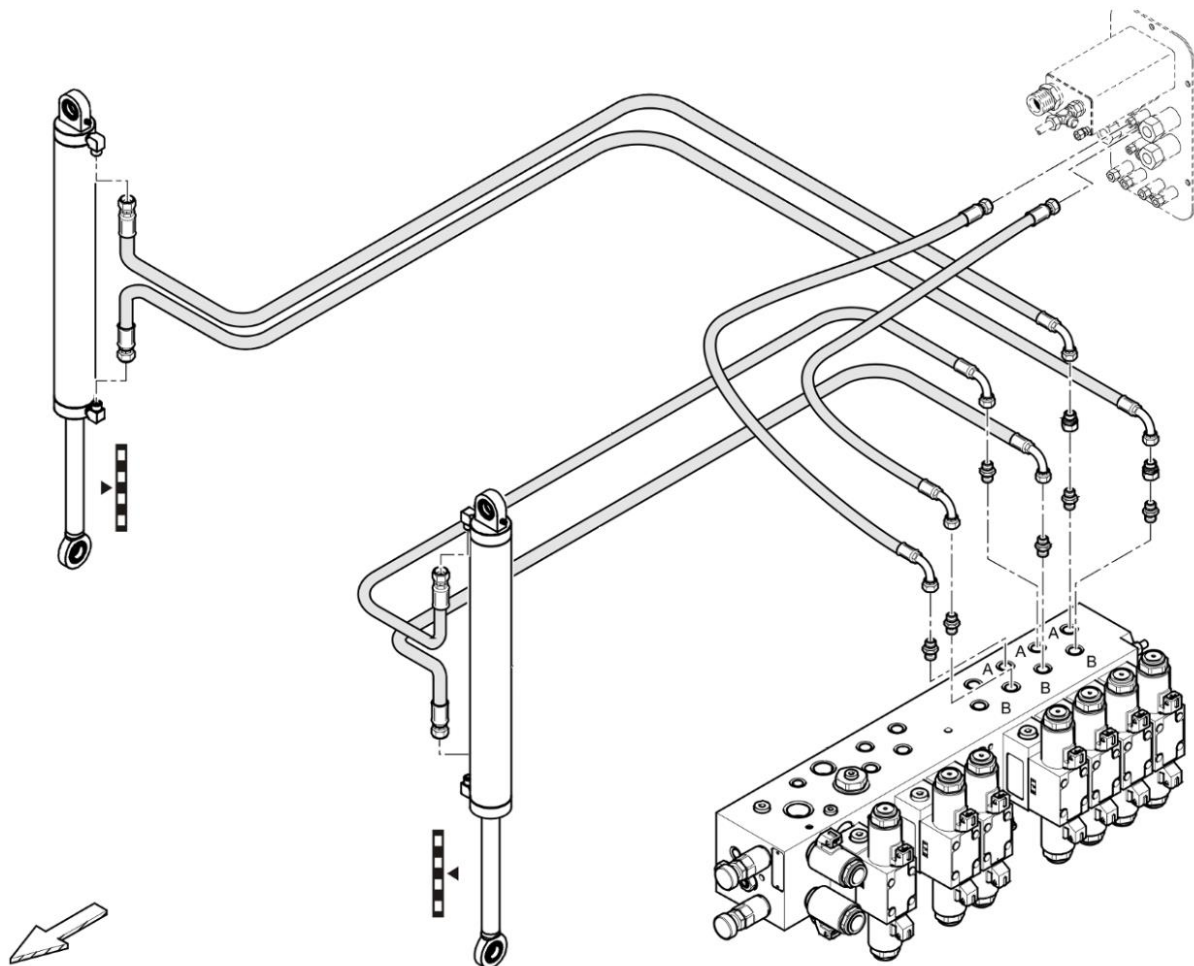
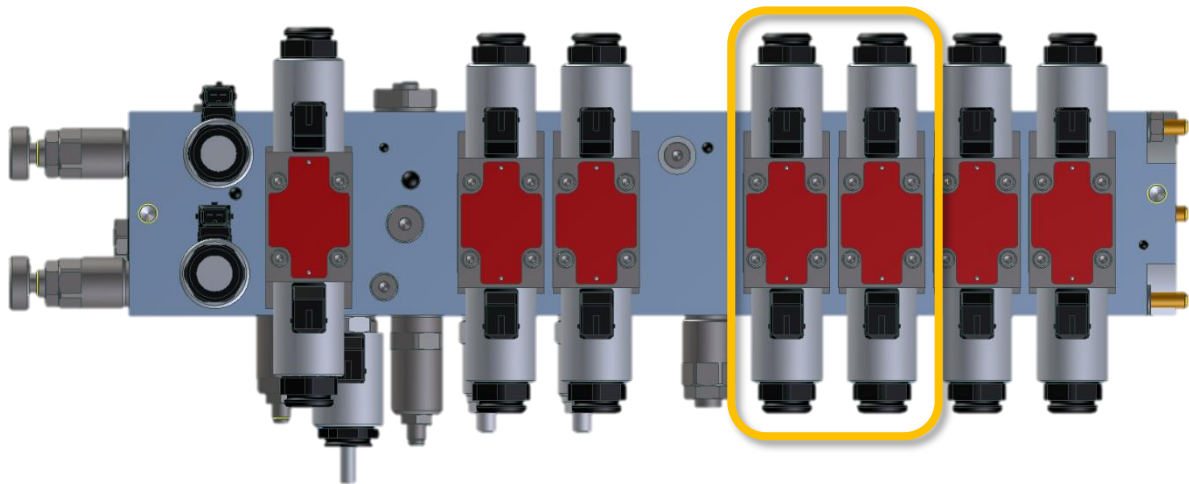
Function circuit screed raise / lower



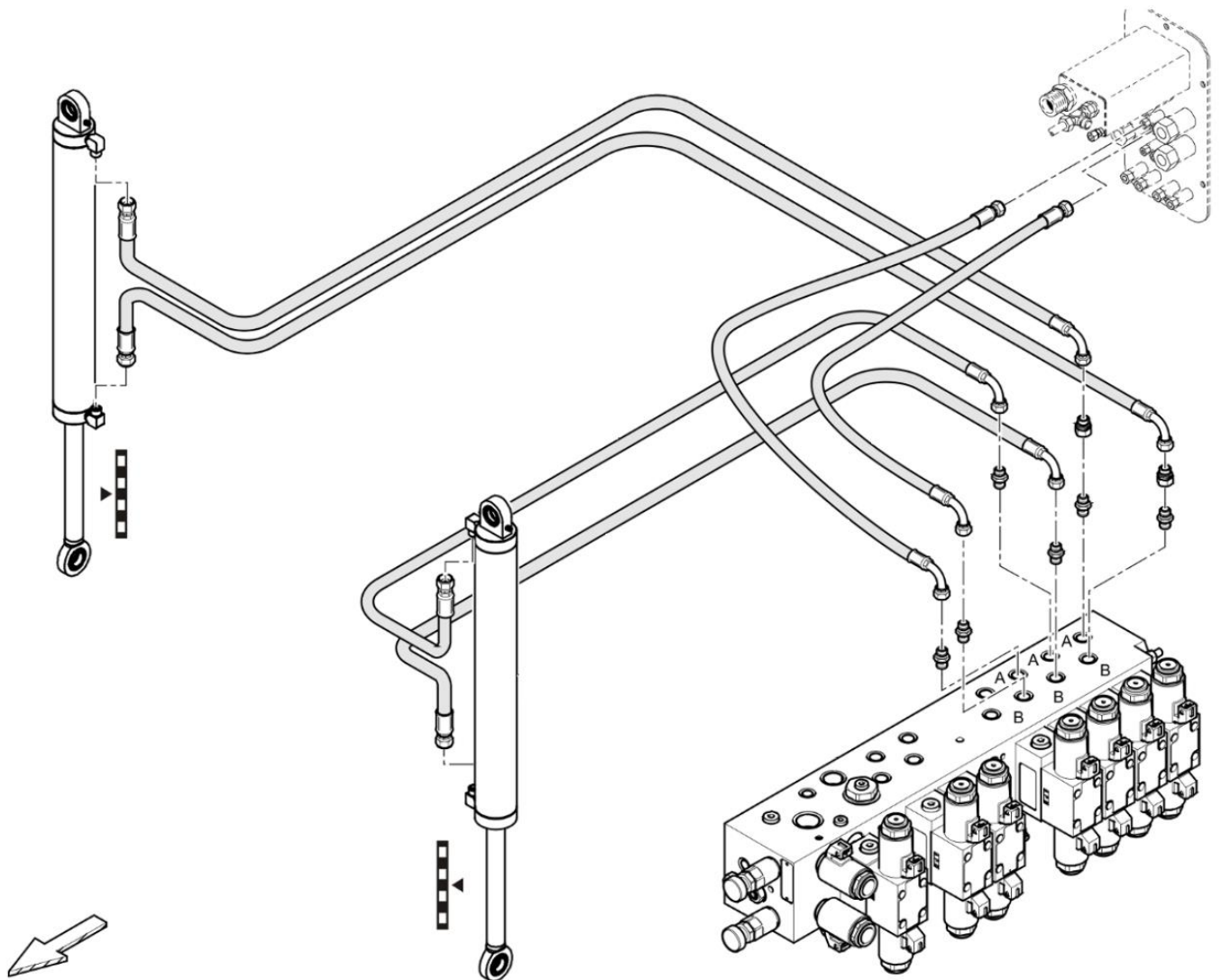
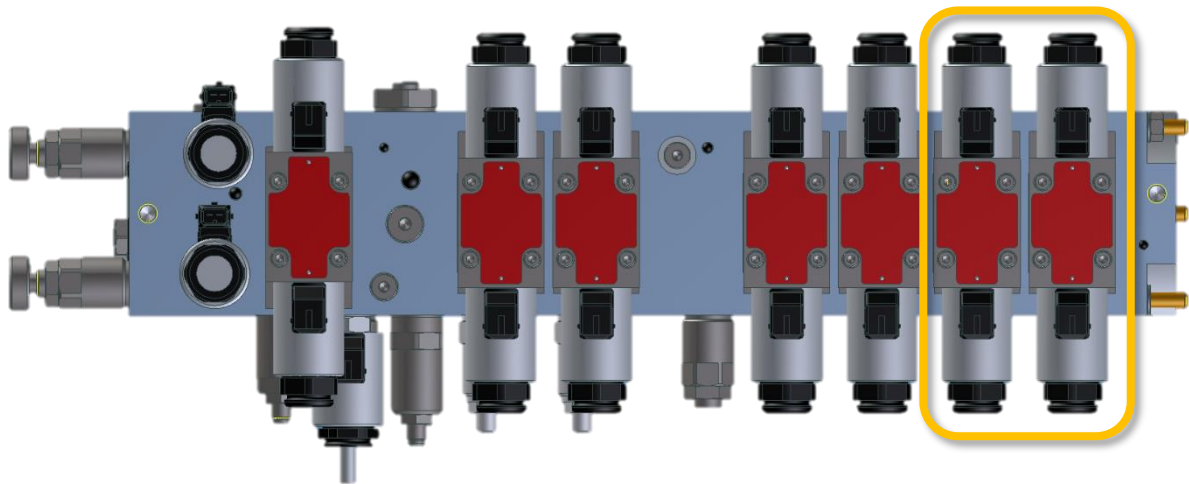
Function circuit Hopper open / close



Function circuit Screed retract / extend



Function circuit Tow Point raise / lower



Technical Support Needed?

Send your request including

- product name,
- Serial Number
- Issue description incl. pictures or Videos

to gmbh-service@dynapac.com

